

Desk Mount Rotary Panel RF Remote Controller

Model No.: RK1, RK2, RK3

Rotary dimming/1-3 color/Wireless remote 30m distance/CR2032 battery



RK1
1 Zone Dimming

RK2
1 Zone CCT

RK3
1 Zone RGB

CE RoHS LVD RED

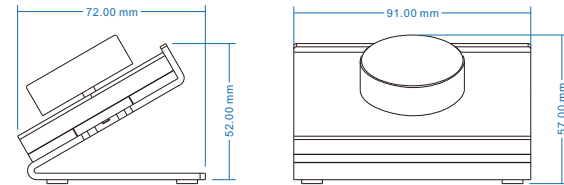
Features

- Apply to single color, dual color or RGB LED controller.
- Rotate knob to change RGB color, color temperature or brightness, support long press or twice click operation.
- Each remote can match one or more receiver.
- CR2032 battery powered.
- Desk mount, removeable anywhere easily.

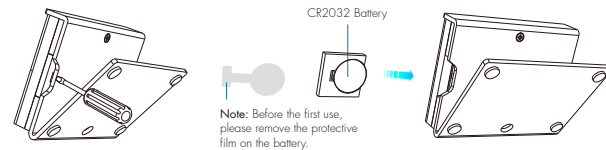
Technical Parameters

Input and Output		Safety and EMC	
Output signal	RF(2.4GHz)	EMC standard (EMC)	EN301 489,EN 62479
Working voltage	3VDC(CR2032)	Safety standard(LVD)	EN60950
Working current	< 5mA	Radio Equipment(RED)	EN300 328
Standby current	< 10μA	Certification	CE,EMC,LVD,RED
Standby time	1 year	Warranty	
Remote distance	30m(Barrier-free space)	Warranty	5 years
Environment		Weight	
Operation temperature	Ta:-30°C ~ +55°C	Net weight	0.061kg
Case temperature (Max.)	Tc:+85°C	Gross weight	0.118kg
IP rating	IP20		

Mechanical Structures and Installations



Replace battery:



Match Remote Control (two match ways)

End user can choose the suitable match/delete ways. Two options are offered for selection:

Use the controller's Match key

Match:
Short press match key, immediately push the knob. The LED indicator fast flash a few times means match is successful.

Delete:
Press and hold match key for 5s to delete all match, The LED indicator fast flash a few times means all matched remotes were deleted.

Use Power Restart

Match:
Switch off the power, then switch on power again, immediately push the knob 3 times. The light blinks 3 times means match is successful.

Delete:
Switch off the power, then switch on power again, immediately push the knob 5 times. The light blinks 5 times means all matched remotes were deleted.

Knob function



RK1 Single color dimming remote

- Push: Turn on or off light.
- After turn on light:
- Rotate: Rotate knob to adjust brightness(2.5 turns, 50 levels).
 - Long push(1-6s): Continuous 256 levels brightness adjustment.



RK2 Color temperature remote

- Push: Turn on or off light.
- After turn on light:
- Rotate: Rotate knob to change color temperature or brightness (2.5 turns, 50 levels).
 - Push twice: Switch between color temperature or brightness adjustment.
 - Long push(1-6s): Continuous 256 levels brightness adjustment.



RK3 RGB remote

- Push: Turn on or off light.
- After turn on light:
- Rotate: Rotate knob to change RGB color (3 turns, 60 colors) or brightness (2.5 turns, 50 levels).
 - Push twice: Switch between RGB color or brightness adjustment.
 - Long push(1-6s): Continuous 256 levels brightness adjustment.

Safety information

1. Read all instructions carefully before you begin this installation.
2. When installing battery, pay attention to the battery positive and negative polarity.
A long time without the remote control, remove the battery.
When remote distance becomes smaller and insensitive, replace the battery.
3. If no response from the receiver, please rematch the remote.
4. Gently handle remote, beware of falling.
5. For indoor and dry location use only.